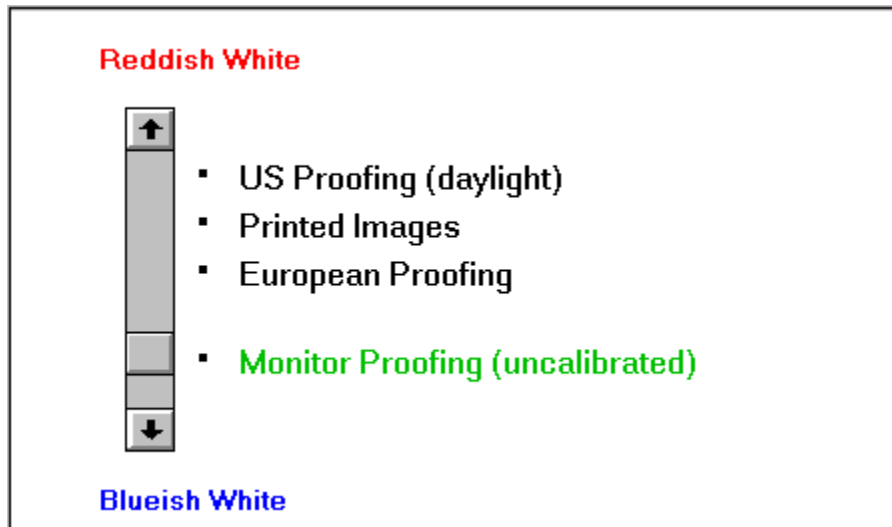


## miroTINT CONTROL

miroTINT CONTROL changes the monitors tint.



The slider adjusts the monitors **tint** (color temperature) continuously between a blueish and a reddish white.

The presettings listed on the right hand side of the slider are reference points for controlling the tint and can be directly clicked. The selected presetting appears green.

- **US Proofing ( daylight )** corresponds to alternate daylight.
- **Printed Images** corresponds to the color temperature used in the photo reproduction of color images.
- **European Proofing** corresponds to the color temperatur often used for European color proofing boxes.
- **Monitor Proofing ( uncalibrated )** corresponds to the color temperature computer monitors are usually adjusted to, thus allowing for a brilliant color representation.

### Other settings

Clicking the **Ok** button saves the actual settings and iconifies the programm. Clicking the **Cancel** button restores the settings saved last and also iconifies the programm.

**miroTINT CONTROL** can only be ended by selecting **Close** from the system menu. Before closing down, the programm queries, if the current settings should be saved. This request is also displayed, when windows is shut down and **miroTINT CONTROL** is active and not iconified.

Every time **miroTINT CONTROL** is started again, the settings saved last will be activated. If the checkbox **Autostart** is set, **miroTINT CONTROL** will be started automatically with every windows start.

## **miroTWINFACE**

If **miroTWINFACE** is installed, the buttons in the box **Twiface** can be used to select the monitor to which all of the following changes will be applied.

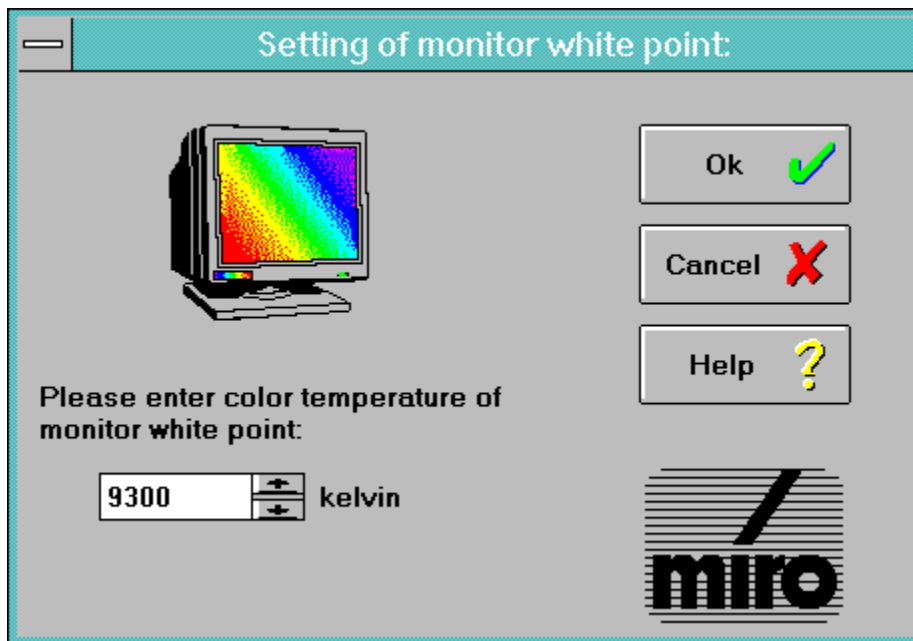
The buttons **Left monitor** and **Right monitor** represent the left and right graphics screen as set up in **miroMONITOR SELECT**. The assignment from the cards to the left and right screen depends on the settings in **miroMONITOR SELECT**.

If **miroTWINFACE** is not installed, the box **Twiface** will be displayed grayed.

## **Monitor white point**

Here the color temperature of the monitors white point is shown, which is usually factory-set to 9300 kelvin. If your monitor has another white point, click **Change**.

In the following dialog box you can specify the monitors white point to a value between 5500 K and 10.000 K. To quit this dialog box, click **Ok**.



## Explanations





## Explanations

### How is a color image created on your monitor?

The inside of a color monitor CRT is coated with a fluorescent coating consisting of different phosphor substances (red, green, and blue).

Three electron guns generate electron beams controlling one color (red, green, and blue).

The electron beams scan the screen line by line, when hitting the phosphors they emit light.

Switching the electron beam on and off creates a dot matrix which creates a monitor image. The individual dots are called pixels (=picture element). Each pixel has a red, a green, and a blue phosphor, a so-called triple.

If all three phosphors are illuminated with equal intensity, the pixel appears **white**.

### What is the white point?

White is created when the red, green and blue pixel areas are illuminated with equal intensity.

Due to internal monitor tolerances and the phosphor used for the picture tube a pure "white" input signal of the monitor (R=G=B=100%) does not result in a white image. The light intensity of blue may for example be weaker as the intensity of red and white thus appears reddish.

Also the spectral components of daylight are not constant. At different places on earth and at different daytimes the daylight may be more toward red or toward blue.

Instead of describing the monitor's white point using the intensities of the primary colors (red, green and blue) (e.g. R=G=100%; B=95%), the color shift is described as **color temperature**. Thus the white point is described as single number without specifying all components individually.

### What is color temperature?

The term **color temperature** describes the relation between a color of a body and its temperature (for example white-hot iron is hotter than red-hot iron). The concept of color temperature is based on a "black radiator", the color of which changes in proportion to its temperature. The color temperature is given in **Kelvins**. A high color temperature results in a color more towards blue while a low color temperature results in a color more towards red.

